

TOP

DIYStyle® - Velcro®
Costume Outfit Woven
Two Piece Outfit - Top
Lower bodice piece - CF & CB
CF w/o fold extension
CB with extension

CF cut 1 on fold from self
CB cut 2 from self

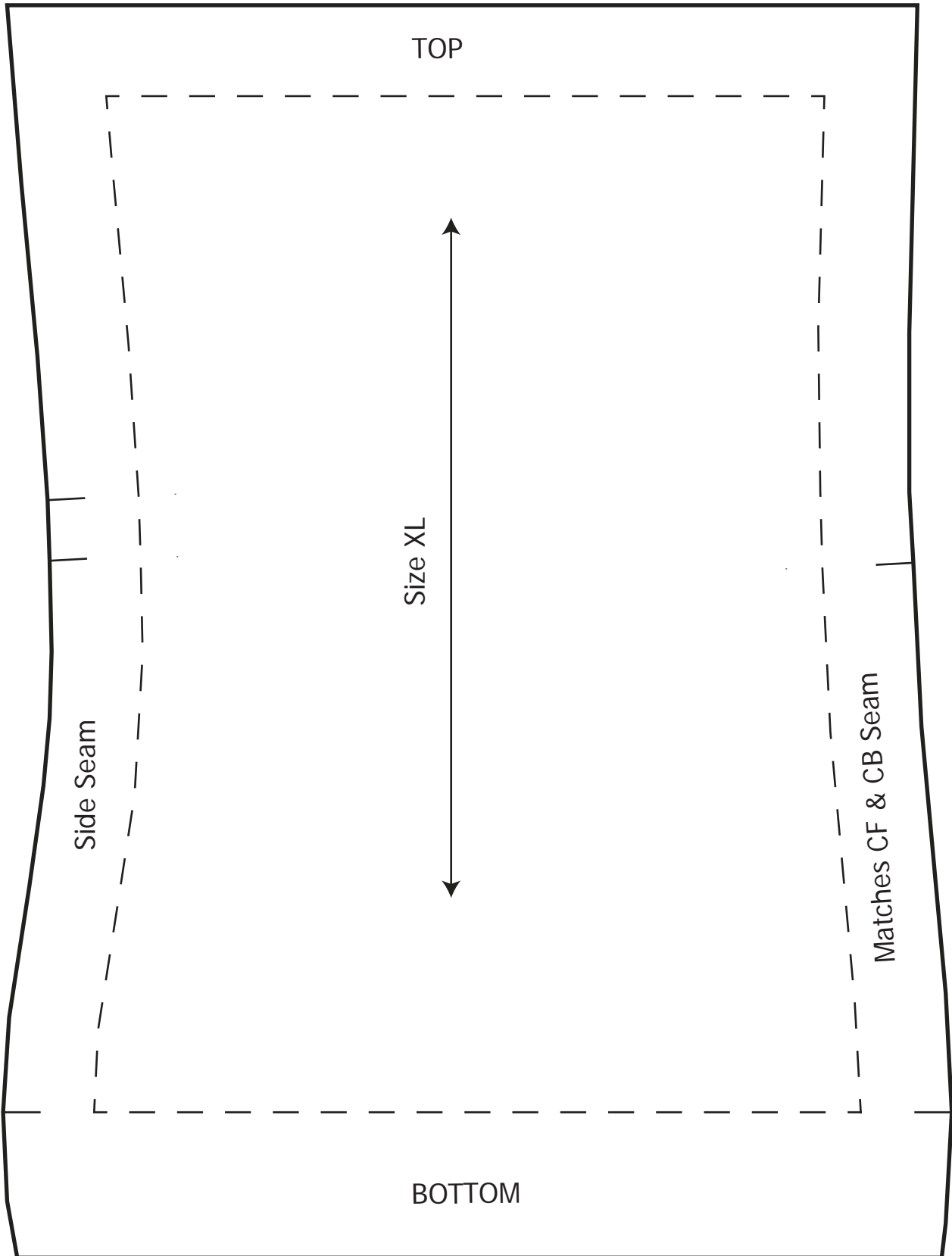
Matches Side Bk & Side Fr Seam

CF cut On Fold

Fold Extension

Size XL

BOTTOM



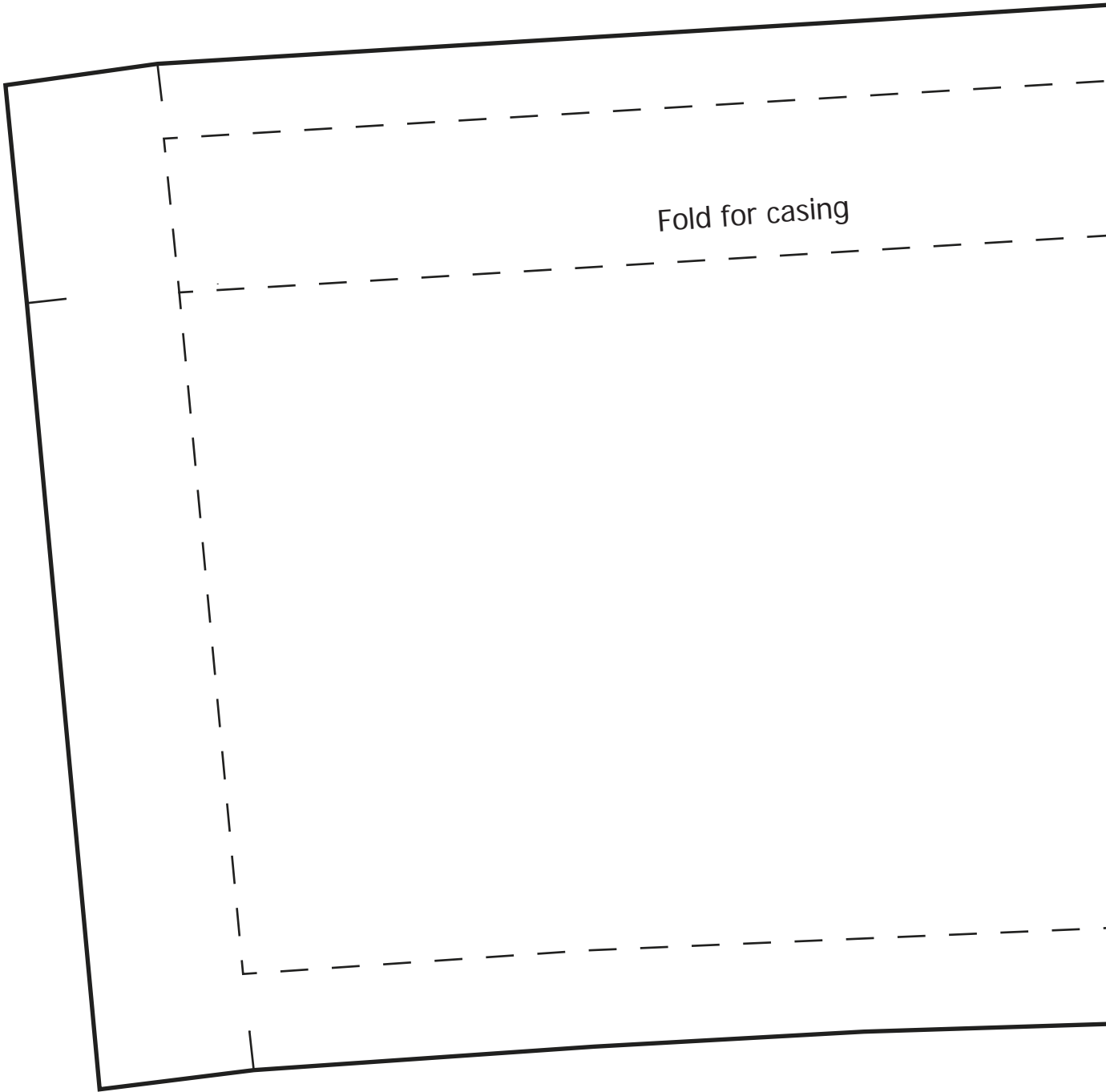
TOP

Size XL

Side Seam

Matches CF & CB Seam

BOTTOM



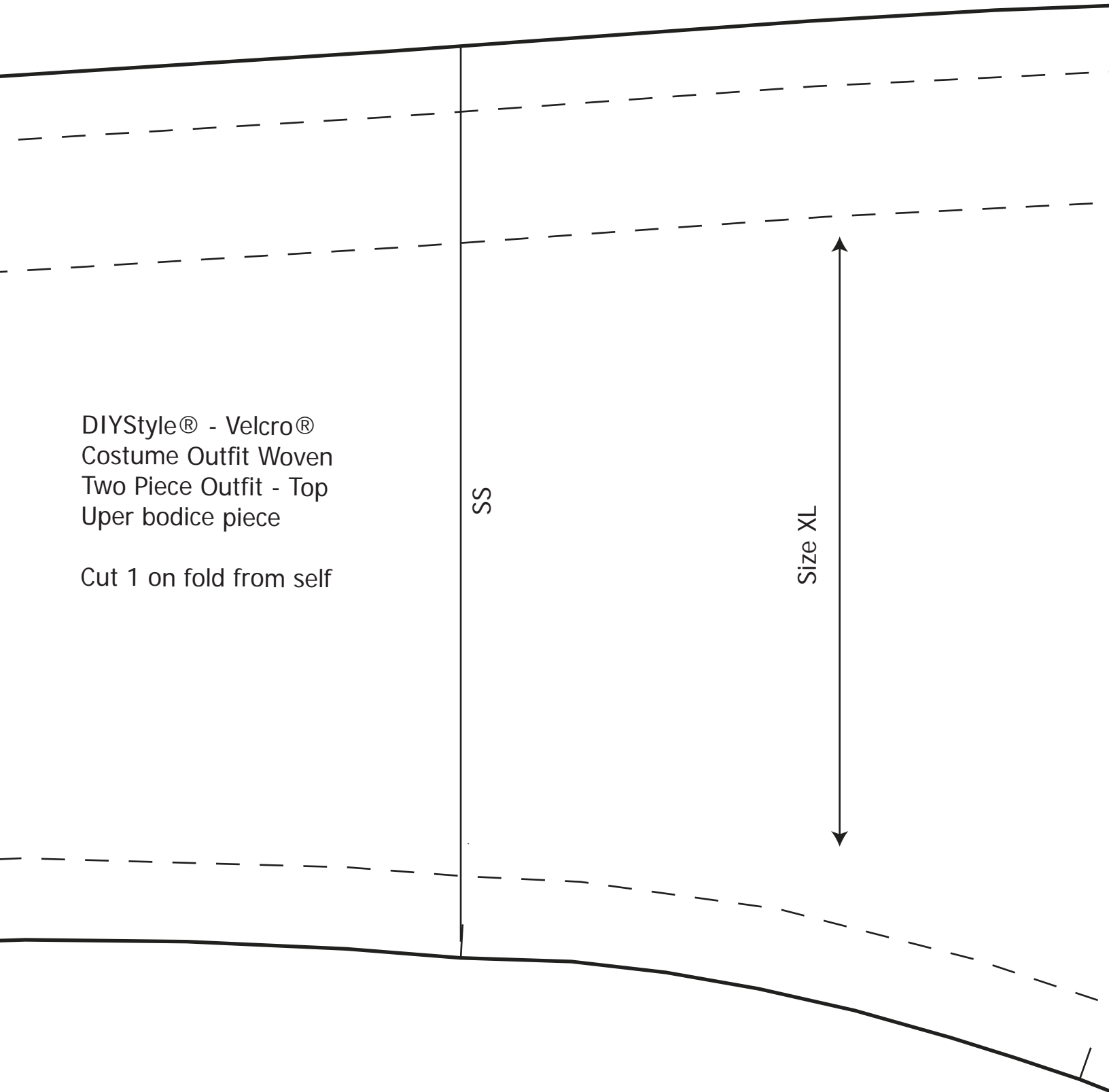
Fold for casing

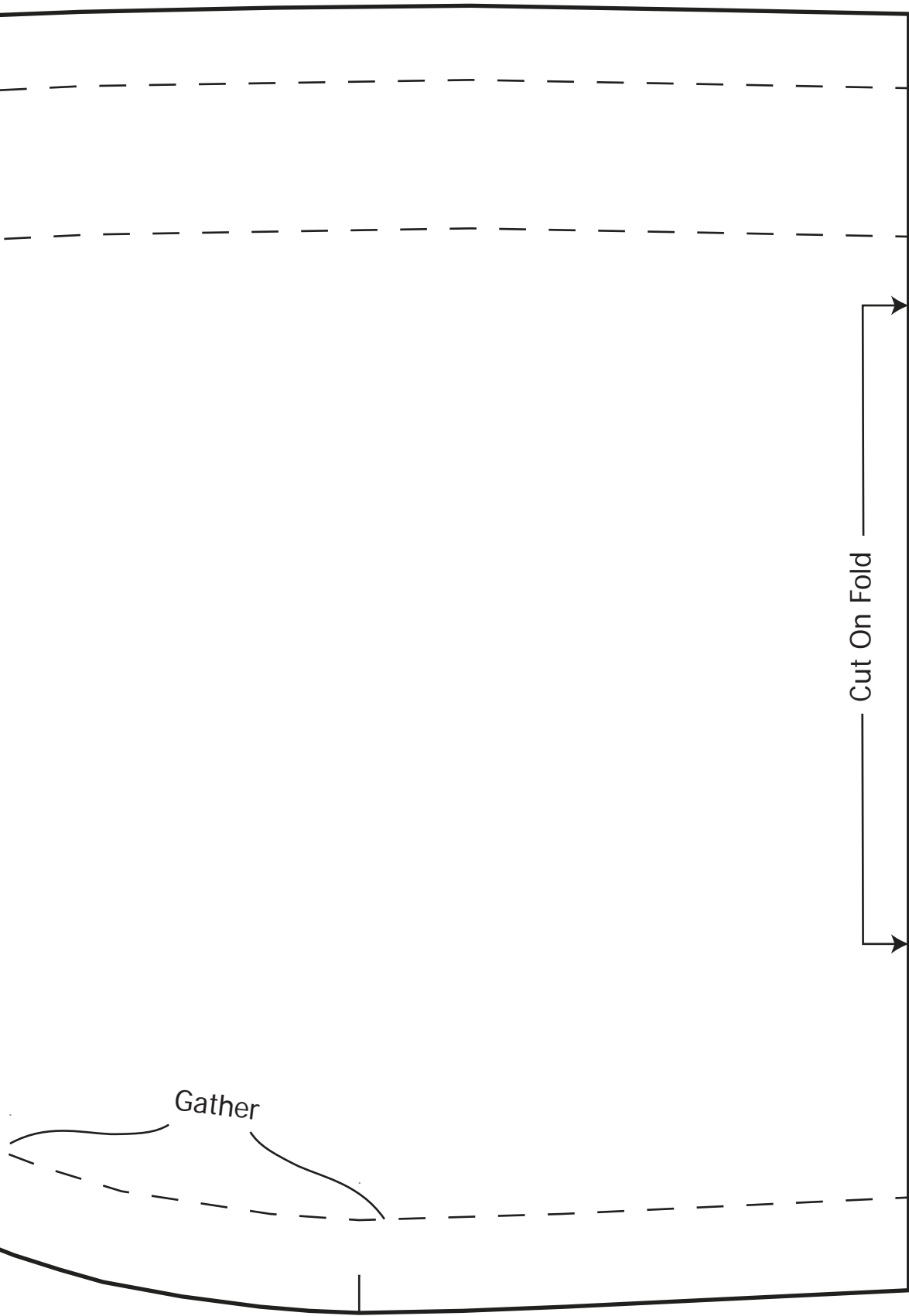
DIYStyle® - Velcro®
Costume Outfit Woven
Two Piece Outfit - Top
Upper bodice piece

Cut 1 on fold from self

SS

Size XL





Gather

Cut On Fold